

Inhaltsverzeichnis



Flosing Opal / Plain Opaque Flosing Glass	04
Flosing gespachtelt Opal / <i>Veined Opaque Flosing Glass</i>	05
Flosing gespachtelt translucent / <i>Translucent Veined Flosing Glass</i>	06
Flosing gespachtelt Transparent / <i>Transparent Veined Flosing Glass</i>	07
Flosing Prisma / <i>Prism Flosing Glass</i>	08-09
Flosing Clásic Transparent / <i>Classic Transparent Flosing Glass</i>	10-11
Flosing Plaqué / <i>Flosing Glass Plaqué</i>	12
<i>Flosing durchgefärbt Vughiogheny</i> <i>Solid Flosing Glass Vughiogheny</i>	13
Flosing Crisol / <i>Crucible Flosing Glass</i>	14-15
Flosing Nácar / <i>Pearl Flosing Glass</i>	15
Flosing Mármol / <i>Flosing Glass Marble</i>	16
Flosing Granit / <i>Flosing Glass Granite</i>	17
Flosing Dichroic / <i>Dichroic Flosing Glass</i>	18
Flosing Edelmetale / <i>Precious Metals Flosing Glass</i>	18
Flosing Gold und Silverhefte <i>Gold and Silver Books</i>	19
Metalische Pigmente / <i>Flosing Metallic colours</i>	19
Aventurin / <i>Aventurine</i>	19
Flosing Plaqué Granulat / <i>Flosing Grain Plaque</i>	20
Neue Flosing Granulat/ <i>New Flosing Grain</i>	20
Flosing Puder und Fritten / <i>Flosing Colours in Powder & Chips</i>	20
Flosing Spachtelfarben / <i>Putty colours</i>	21
Flosingmal Farben / <i>Paintbrush colours</i>	21
Glassplittern / <i>Eggshells</i>	21
Spagettis / <i>Mini-rods</i>	21
Blasenpulver Boreal / <i>Boreal Bubble</i>	22
Blasenpulver Clásic / <i>Classic Bubble</i>	22
Blaseneffekte mit Glas / <i>Bubble Effects with glass sheets</i>	22
Malfarbe fuer hochtemperatur / <i>Paints For High Temperature</i>	23
Flosing Mahlstifte / <i>Flosing Felt-Pen and Outline Pen</i>	23
Malmittel A fuer Farben/ <i>Vehicle A for Paints</i>	23
Malfarben fuer niedrig Temperatur / <i>Paints For Low Temperature</i>	2&
Granulat niedrigtemperatur / <i>Low Temperature Grain</i>	
Grisalla / <i>Grisaille</i>	24
Emailfarben wasserloeslich / <i>Monocomponent Enamel</i>	25
Lavaboseinsaetze aus Glas / <i>Artesan Sink Bowl</i>	26
Lavabohalterungen aus Chromstahl / <i>Inox Sink Brackets</i>	27
Lavaboformen aus Chromstahl / <i>Cerapaper Ceraboard</i>	
<i>Stainless steel Support for washbasins moulds, Ceramic Paper and Boards</i>	28
Trennpulver und Accessoires / <i>Dry Separating Powder and Accessories</i>	29
Oele, Fusingkleber, UV Leber, Accessoires / <i>Oil, Varnish, Glue and Accessories</i>	30-31
Giessharz zum laminieren / <i>Resin For Laminated Glass</i>	32
Spritzpistole, Sandstrahlmaschine	33
Diamantsaegle Taurus	34
Glasschneidemaschine, Stressometer, Dossiergeraet, UV Lampe	36



P41 Gruen / Green



P40 Gruen / Green



P42 Blau / Blue



P48 Schwarz / Black



P51 Pistaziengruen / Pistachio Green



P47 Weiss / White



P43 Gelb / Yellow



P44 Orange / Orange



P46 Rot / Red



P49 Leuchtrot / Intense Red



P45 Rosa / Pink

Originalgrosse (257 x 162mm) einen Teil der Ref. P44 Orange
Actual size (257 x 162mm) of an area of the sheet, ref. P44

Flosing Opal *Plain Opaque Flosing*

f
mit einer sehr starken Leuchtkraft
Diese Glaeser eignen sich fuer Dekorationsarbeiten
wo das Fusingobjekt nicht Lichtdurchlaessig sein muss.
z.B. Glasfliessen, Mosaikarbeiten, Wandverkleidungen ua.

Planchas de 160 x 60 cm; Espesor 2mm

Sheets of 160 x 60 cm; Thickness 2mm

Range of 12 plain colours full of brightness and strength.

These are the ideal kinds of glass for making mosaics, tiles, Étc as when they are glued or fixed against and opaque surface (wall, frame, etc...) the adhesive is not visible. They can also be applied for furniture, gifts and decoration, provided that we do not need to see the fusing piece against the light.



V69 Schwarz / Black



V63 Blau / Blue



V62 Blau / Blue



V61 Gruen / Green



V60 Gruen / Green



V65 Gelb / Yellow



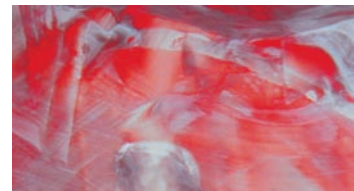
V64 Beige / Beig



V70 Hellbraun / Light Brown



V66 Orange / Orange



V68 Rojo / Red



V67 Rosa / Pink



Die Opal Farben werden gleich wie die Transparenten Farben in 2 Versionen hergestellt, Unifarben und gespachtelte Farben.

The Opaque Flosing Glasses are manufactured in veined as well as plain colours.

Originalgröße (257 x 162mm) einen Teil der Ref: V66
Actual size (257 x 162mm) of an area of the sheet, ref. V66

Flosing Opal gespachtelt *Veined Opaque Flosing*

Verfuegbar in 11 verschiedenen Farben
Wie bei den Unifarben sind die Anwendungsgebiete Fusingobjekte wo das Licht nicht durchdringen muss

Available in 11 colours. Similar as plain opaque but textured, ideal for all sorts of decoration where the item is designed for surface placing and we do not need to see the product against the light. It will dress places as tables or counter tops and glass sinks.

Tafelgroese 160 x 60 cm 2mm
Sheets of 160 x 60 cm; Thickness 2mm



V102 Blau / Blue



V103 Blau / Blue



V118 Grau / Grey



V109 Schwarz / Black



V101 Gruen / Green



V117 Braun / Brown



V100 Gruen / Green



V116 Orange-Gelb / Orange Yellow



V115 Pistazien / Pistachio



V106 Orange / Orange



V110 Gruen-Gelb / Green-Yellow



V108 Rot / Red



V113 Weiss / White



V107 Rosa / Pink



V105 Gelb / Yellow



V111 Dunkelrosa / Dark pink



V104 Beige / Beig



V112 Violet / Violet



V114 Hellbraun / Light Brown



Originalgrosse (257 x 117mm) einen Teil der Ref; V109
Actual size (257 x 117mm) of an area of the sheet, ref. V109

Flosing Translucent gespachtelt *Translucent Veined Flosing*

Durch die Spezielle Art welche die Farben aufgetragen wurden, erlaubt, dass das Licht in verschiedenen intensitaeten durch das Glas leuchtet.

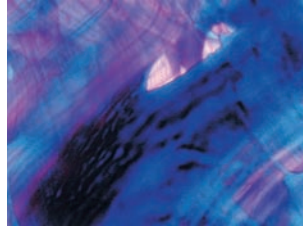
19 verschiedene Farben erlauben eine perfekte kombination fuer eine Fusingarbeit mit verschiedenen Nuancen.

The translucent veined glass, thanks to the particular way in which it has been coloured, allows light to pass through the glass in different ways, depending on how shiny or opaque the areas of glass are. We will be able to combine the 19 different tonalities to create an artistic art-work with different shades.

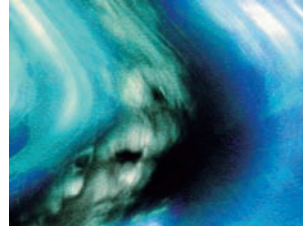
Tafelgrosse 160 x 60 cm 2 mm
Sheets of 160 x 60 cm; Thickness 2mm



V87 Aschgrau / Ash Grey



V81 Blau-Violet / Blue-Violet



V80 Blau-Gren/ Blue-Green



V88 Neue Blau / New Blue



Das Flosingglas gespachtelt ist ein von Hand dekoriertes Glas. Das bewirkt dass alle Creationen unterschiedlich ausfallen.

The veined Flosing glass is a capricious, handcrafted coloured glass, which makes every glass sheet unique. Therefore, we cannot manufacture two identical products and every work created is exclusive.

Actual size (257 x 117mm) of an area of the sheet, ref. V87

Flosing Transparent gespachtelt Transparent Veined Flosing

Das Flosing Transparente Glas ist von einer ausgeprägten Schönheit. Diese Glaeser besitzen die Faegigkeit das man sie auf ihrer Rueckseite auch ins Licht betrachten kan ohne das Leuchtkraft und Farbe verloren gehen. Verfuegbar sind 8 Grundfarben und 8 verschiedene Farben in Pastelton.

The transparent veined glass sheets are particularly beautiful, since they create an extraordinary combination of shade, light and colour. To the 8 basic colours already available, we have added a new series of 8 new Light colour combinations.

These glasses have the peculiarity you can see them against the light without loosing any colour, intensity or texture.

Tafelgroesse 160 x 60 cm 2mm
Sheets of 160 x 60 cm; Thickness 2mm



V83 kupfer / Copper



V90 Neue Hellblau / New Light Blue



V94 Neue Chocolatbraun
New Brown Chocolate



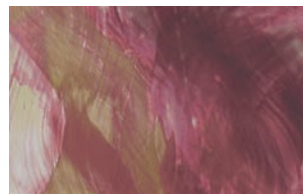
V89 Neue Tuerkis / New Turquoise



V95 Neue Rosa-Braun
New Pink Brown



V91 Nuevo Verde / New Green



V85 Multicolor / Multicolour



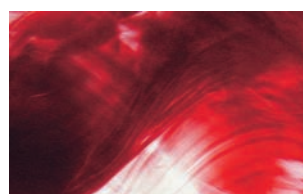
V82 Ocker / Ochre



V84 Rot-Gelb / Red-Yellow



V93 Neue Gelb / New Yellow



V86 Rot / Red



V92 Neue Tuerkis-Gelb
New Turquoise-Yellow



PR19 Gelb-Rosa
Yellow-Pink



PR13 Gelb
Yellow



PR20 Weiss
White



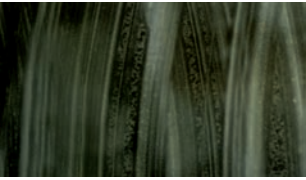
PR06 Gruen-Blau
Green-Blue



PR04 Gruen-Blau
Green-Blue



PR17 Braun-Gelb
Brown-Yellow



PR18 Dunkelgrau
Dark Grey



PR08 Braun-Amber
Brown-Amber



PR09 Braun-Gelb
Brown-Yellow



PR12 Orange
Orange



PR11 Orange-Gelb
Orange-Yellow



PR10 Gruen-Orange
Green-Orange



PR14 Rot
Red



PR15 Rosa opal
Opaque Pink



PR07 Gruen Opal
Opaque Green

Originalgroesse (257 x 246mm) einen Teil der Ref; PR07
Actual size (262 x 259mm) of an area of the sheet, ref. PR07

Flosing Prisma Prism Flosing

Neue Flosing Serie verfuegbar in 20 transparenten, translucen und opal-Farben.

Geeignet fuer Fusingarbeiten mit kleinen Stuecken.

(wegen seiner gleichmaesigkeit und Farbkombination.)

Die mehrheit diese Glaeser besitzen die Eigenschaft, das man Sie ins gegenlicht und von der Rueckseite ohne Leuchtkraft und Farbverlust sehen kann.

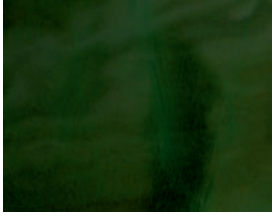
New range of Flosing glass available in 20 colours transparent, translucent and opaque.

Awesome colour combinations for the one who knows. Specially adapted to work with very small pieces by its regularity in the combination of the colour.

Most of these glasses have the peculiarity that you can see them against the light without loosing any colour, intensity or texture.

Tafelgroesse 160 x 60 cm 2mm

Sheets of 160 x 60 cm; Thickness 2mm



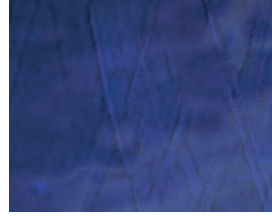
PR05 Gruen
Green



PR03 Tuerkis
Turquoise



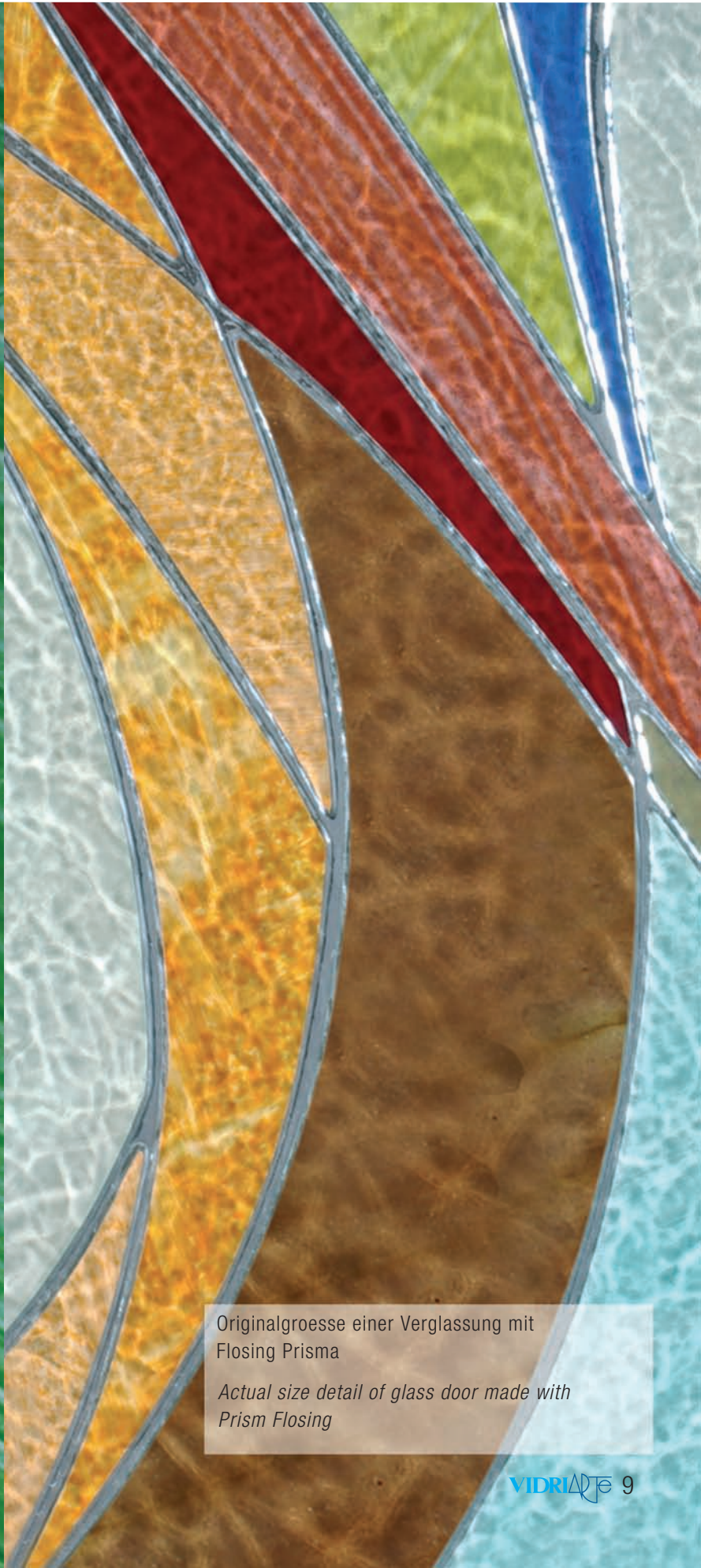
PR02 Blau
Blue



PR01 kobaltblau
Cobalt Blue



PR16 Meeresblau
Blue Sea



Originalgrosse einer Verglassung mit
Flosing Prisma
*Actual size detail of glass door made with
Prism Flosing*



T09 Gruen
Green



* T12 Emeraldgruen
Emerald Green



T22 Gruen
Green



T35 Flaschengruen
Bottle Green



T29 Dunkelgruen
Dark Green



T25 Gelb
Yellow



T16 Leuchtgelb
Intense Yellow



T21 Gruen
Green



T20 Hellgruen
Light Green



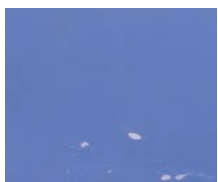
T24 Blau
Blue



T23 Blau
Blue



T28 Blau
Blue



T17 Mediumblau
Medium Blue



T15 Hellblau
Light Blue



* T13 Helltuerkis
Light Turquoise



T08 Grau
Grey



Flosing Clásic Transparent *Classic Transparent Flosing*

Das Flosing Transparent wurde mit hochwertigen Farben und zum Teil mit Edelmetallen hergestellt. Das erzeugt einen speziellen Glanz, Farbintensität sowie eine grosse Lichtdurchlässigkeit. Ueber 30 Farben in verschiedenen Nuancen und Intensität stehen zur Verfügung.

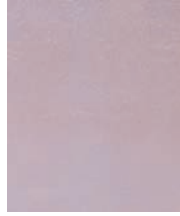
Als Neugkeit stehen auch Glaeser zur Verfügung welche auf die Rueckseite gelegt *, erreichen wir einen Blasenefekt.*

The transparent Flosing glass is made with the highest quality products. In most cases, precious metals are used, which give the Flosing glass a special shine, colour and diaphanous quality. More than 30 different colours in the widest range of tone and intensity. Within this range of colours, and as news, we do have available certain glass sheet references with which we can produce the bubble effect only by placing the colour glass sheet face down ().*

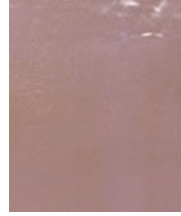
Tafelgrosse 160 x 60cm 2mm
Sheets of 160 x 60 cm; Thickness 2mm



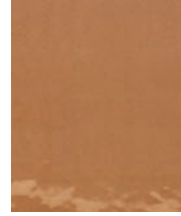
T10 Goldgelb
Gold Yellow



* T11 Hellbraun
Light Brown



T19 Mediumbraun
Medium Brown



T33 Braun
Brown



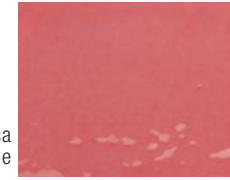
* T07 Lichtbraun
Intense Brown



T05 Mediumamber
Medium Amber



T31 Roeltich
Reddish



T26 Rosa
Rose



T36 Orange
Orange



T27 Magenta
Magenta



T32 Dunkelmagenta
Dark Magenta



T06 Lichtmagenta
Intense Magenta



T30 Violet
Violet



* T18 Blauviolet
Bluish Violet



T34 Dunkelviolet
Dark Violet



T165 Zitronengelb
Lemon Yellow



T152 Gruen
Green



T160 Flaschengruen
Bottle Green



T162 Tuerkis
Turquoise



T151 Aquamarin
Aquamarine



T158 kobaltblau
Cobalt Blue



T159 Dunkelblau
Dark Blue



T161 Meerblau
Sea Blue



T150 Gelb
Yellow



T153 Ámber
Amber



T166 Mittelbraun
Medium Brown



T155 Braun
Brown



T163 Orange Transp.
Transp. Orange



T164 Orangerot
Orangish Red



T156 Rot
Red



T157 Dunkelrot
Dark Red



T167 Neue Magenta
New Magenta

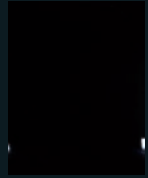


Flosing Plaqué Flosing Plaqué

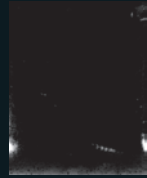
Ein wichtiger Schritt in der Forschung und Entwicklung. Vidriarte offeriert ein hechtes Plaqué aus intensiven und lebendigen Farben. Es ist das erste Plaqué auf dem Markt welches mit Floatglas hergestellt wurde. Das Flosing Plaqué eignet sich speziell fuer Sandstrahlarbeiten.

As part of our ongoing R + D (Research and Development) work, Vidriarte offers you authentic Flosing Plaqué with bright intense colours. It is the first Plaqué manufactured with float glass. Most of our friends and clients (artists, artisans and industrialists) asked for a product with these characteristics and today, after various years of research, we have achieved our goal and are pleased to be able to offer you the greatest guarantee of quality. The Flosing plaque can be sand engraved partially to create a complete range of designs. We hope that this glass will help you to produce work which is increasingly beautiful and successful now and in the future.

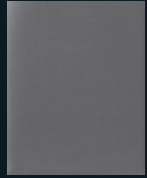
Tafelgroesse 160 x 60 cm 2mm
Sheets of 160 x 60 cm; Thickness 2mm



CM522
Schwarz
Black



CM517
Dunkelgrau
Transparent
Transparent Dark Green



CM518
Perlgrau
Opal
Opaque Peal White



CM500
Kobaltblau
Cobalt Blue



CM502
Aquamarin
Aquamarine



CM501
Tuerkis
Turquoise



CM503
Hellblau
Light Blue



CM511
Gruen
Green



CM512
Hellgruen
Light Green



GLASS AND FRITS COMPATIBLE WITH FLOAT



YOUGHIOGHENY



CM514 Aepfelgruen
Apple Green



CM513 Gelbgruen
Greenish Yellow



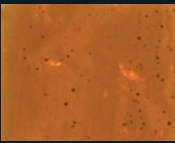
CM519 Weiss Opal
Opaque White



CM509 Gelb
Yellow



CM508 Ámber
Amber



CM507 Orange
Orange



CM506 Rot
Red



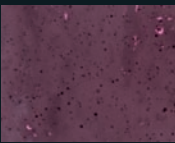
CM505 Dunkelrot
Dark Red



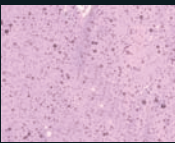
CM515 Pflaume
Plum



CM520 Púrpur
Purple



CM516 Lichtrosa
Light Pink



Flosing durchgefärbt Solid Flosing

Fuer Fachpersonen, welche einen hohen Qualitaetsanspruch auf die zu bearbeitenden Glaeser haben, oeffnen sich jetzt neue Moeglichkeiten.

Wir praesentieren Ihnen aus der renommierten Glashuette YOUGHIOGHENY das neue durchgefärbte Glas, welches nicht nur mit Float kompatibel ist, sondern auch mit allen unseren Flosing Glass Produkte.

Bereits umfasst die erste Serie 17 Transparent und 3 Opal Farben. Weitere Farben folgen.

Tafelgroesse 90 x 60 cm 3mm dick

Wir bieten Ihnen auch die dazu kompatiblen Floatglas zu sehr vorteilhaften konditionen an.

Artists, glass artisans, glaziers, and rest of people used to work with solid glass: You do not have excuse to work with float anymore.

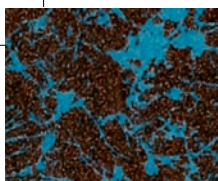
We introduce the new solid glass compatible with float glass as well as with the rest of our Flosing products.

We have just started with a series of 17 transparent colours and 3 opaque but we will soon have more available.

Perfect combination for the purists of the glass and fusing technique.

All Flosing solid glasses have been tested at the beginning of the production system by Vidriarte.

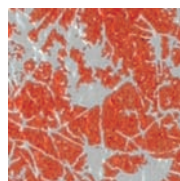
Sheets of 90 x 60 cm; Thickness 3mm



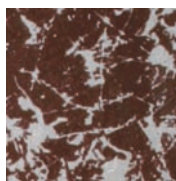
A-254 Braun-Blau
Brown-Blue



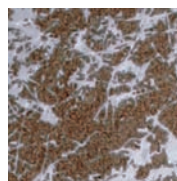
A-206 Goldrubí
Gold Ruby



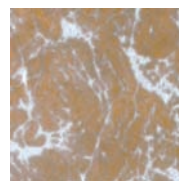
A-209 Rot Opal
Opaque Red



A-211 Dunkel Violet
Dark Violet



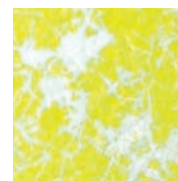
A-210 Rehbraun
Deer Brown



A-208 Ámber
Amber



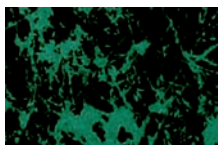
A-205 Weiss Opal
Op. White E. Dense



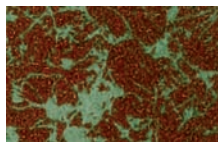
A-207 Gelb Opal
Op. Yellow E. Dense



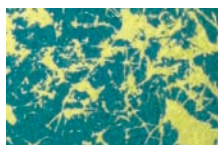
A-253 Ámber-Blau
Amber-Blue



A-261 Schwarz-Gruen
Black-Green



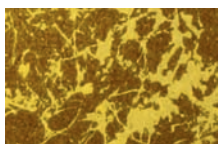
A-260 Rehbraun-Gruen
Deer Brown-Green



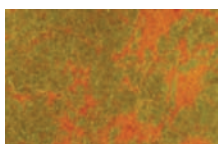
A-252 Blau-Gelb
Blue-Yellow



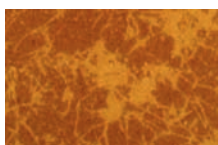
A-250 Orange-Gelb
Orange-Yellow



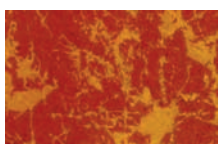
A-251 Rehbraun-Gelb
Deer Brown-Yellow



A-256 Ámber-Gruen
Amber-Green



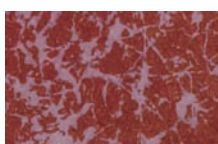
A-257 Ámber-Braun
Amber-Brown



A-258 Ámber-Rot
Amber-Red



A-259 Granatrot
Maroon-Red



A-255 Rot-Violet
Red-Violet



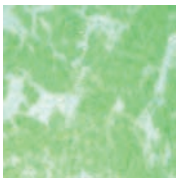
Originalgrösse (257 x 162mm) einen Teil der Ref; A-204
Actual size (257 x 162mm) of an area of the sheet, ref. A-204

Flosing Crisol *Crucible Flosing*

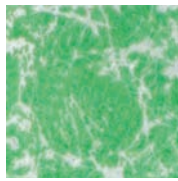
Eine neue Serie aus 24 Farben unterteilt in Crisol monocolor 12 Farben, und 12 Farben Crisol bicolor. Diese neue Serie kann mit allen anderen Flosing Serien und Fritten kombiniert werden und somit die Kreation neue Designs mit Flosing zu ergaenzen.

A new range of 24 glass colours among our Series Crucible Monocolour (12 colours) and 12 other new colours from the Series Crucible Bicolour. This new range of glass colours can be combined with our Flosing glass range and frits to create new designs in fusing compatible with float glass.

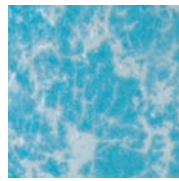
Tafelgrösse 160 x 60 cm 2 mm
Sheets of 160 x 60 cm; Thickness 2mm



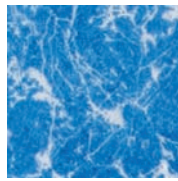
A-200
Chromgruen
Chrome Green



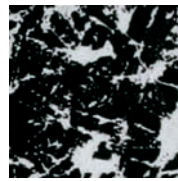
A-201
Dunkelgruen
Dark Green



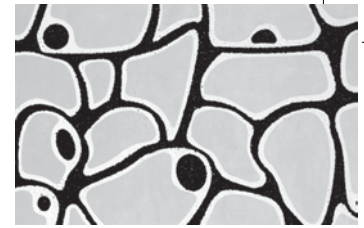
A-202
Dunkelaquamarin
Dark Aquamarine



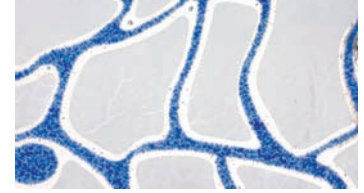
A-203
Kobaltblau
Cobalt Blue



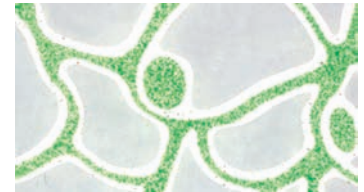
A-204
Schwarz
Black



NA 04 Schwarz / Black



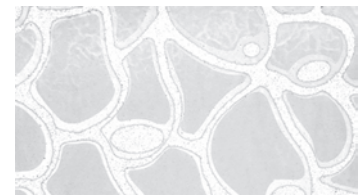
NA 01 Blau / Blue



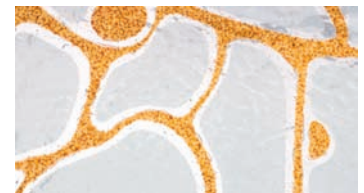
NA 02 Gruen / Green



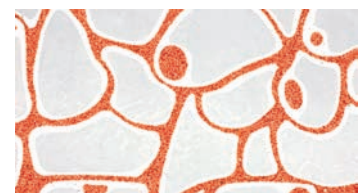
NA 03 Gelb / Yellow



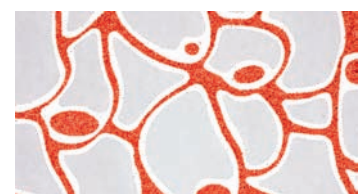
NA 08 Weiss / White



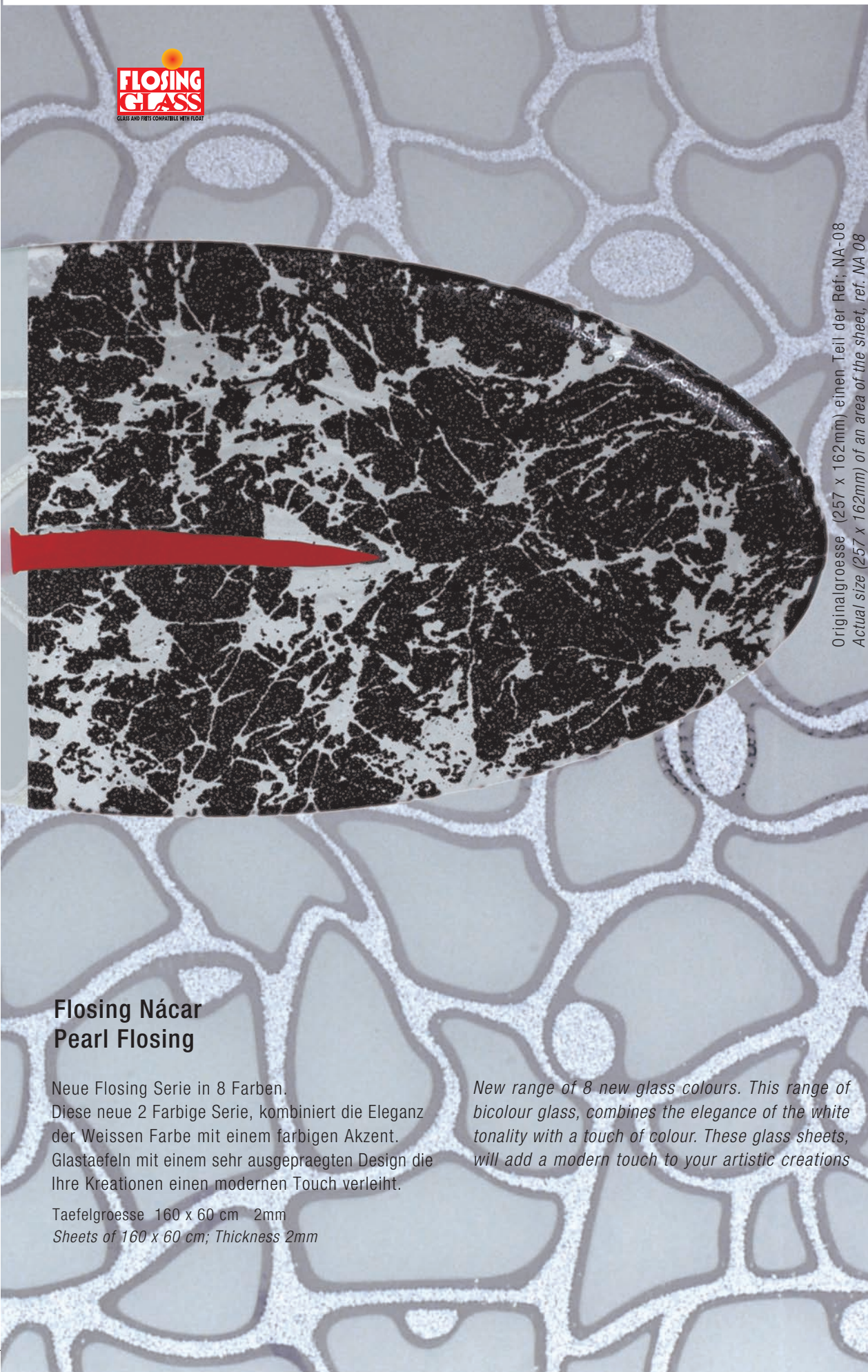
NA 07 Orange / Orange



NA 06 Rot / Red



NA 05 Dunkelrot / Dark Red



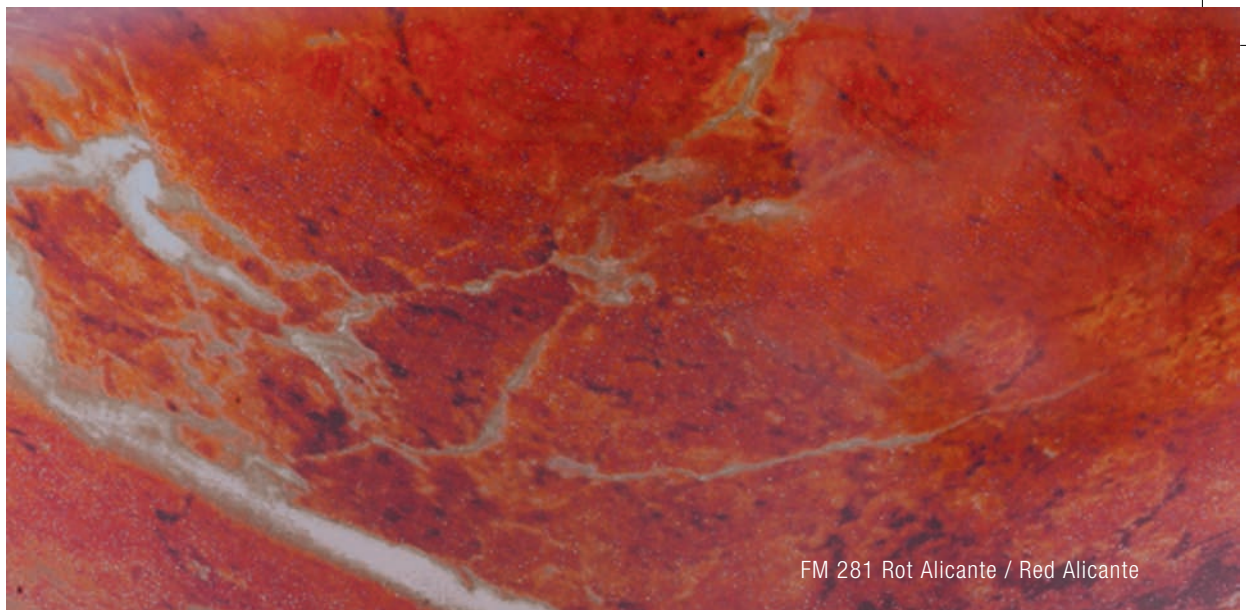
Originalgrösse (257 x 162mm) einen Teil der Ref. NA-08
Actual size (257 x 162mm) of an area of the sheet, ref. NA 08

Flosing Nácar Pearl Flosing

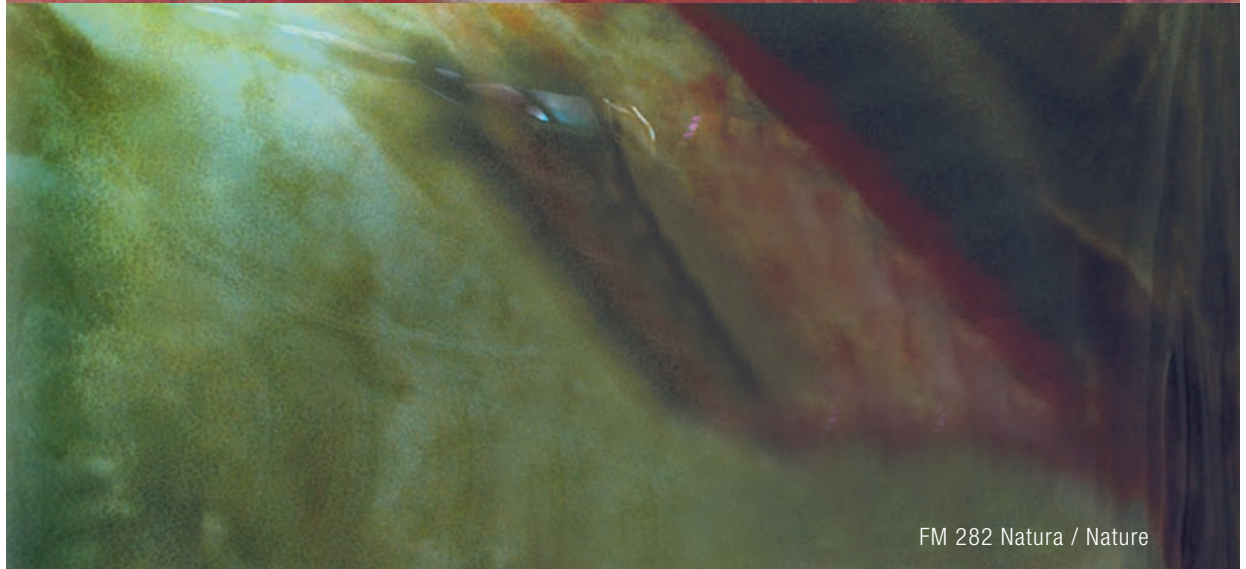
Neue Flosing Serie in 8 Farben.
Diese neue 2 Farbige Serie, kombiniert die Eleganz
der Weissen Farbe mit einem farbigen Akzent.
Glastaefeln mit einem sehr ausgepraegten Design die
Ihre Kreationen einen modernen Touch verleiht.

Taefelgrösse 160 x 60 cm 2mm
Sheets of 160 x 60 cm; Thickness 2mm

*New range of 8 new glass colours. This range of
bicolour glass, combines the elegance of the white
tonality with a touch of colour. These glass sheets,
will add a modern touch to your artistic creations*



FM 281 Rot Alicante / Red Alicante



FM 282 Natura / Nature



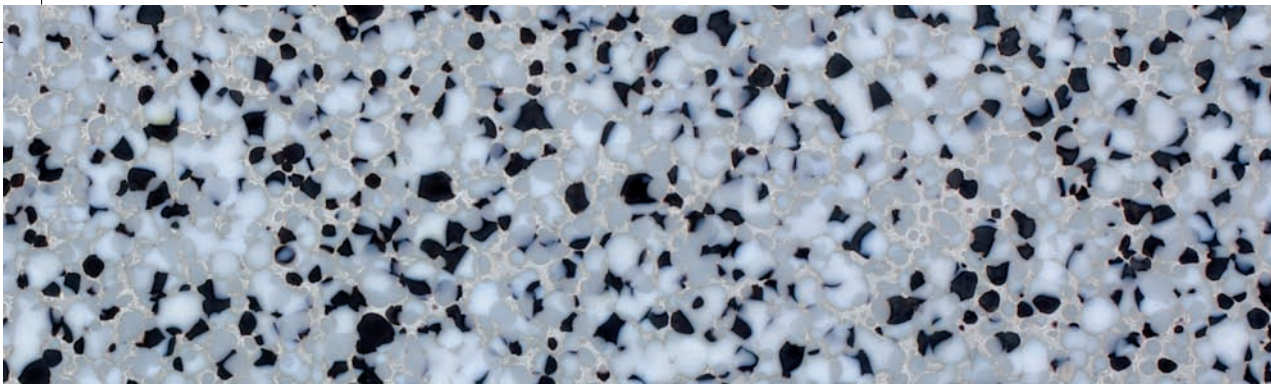
FM 280 Botticino / Botticino

Flosing Mármor Flosing Marble

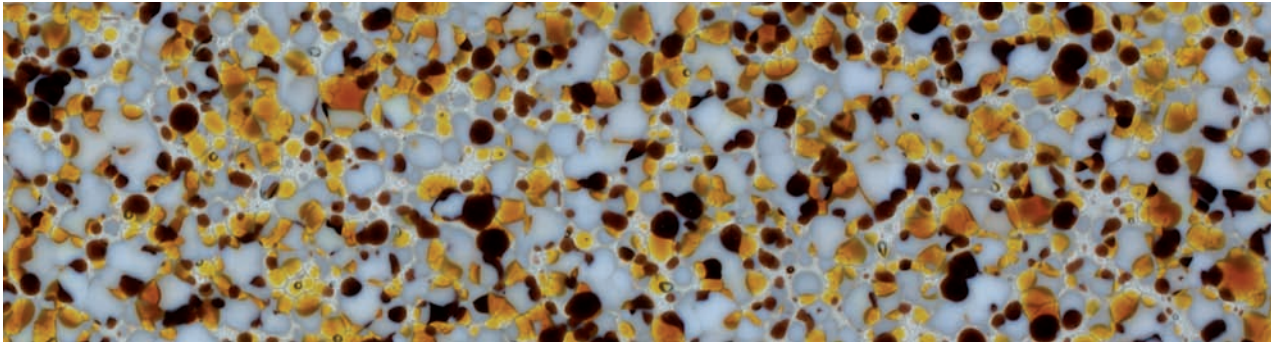
Marmor ist eine original Stein welche Farben und Texturen kombiniert, ist ein Produkt die eine sehr intensive Pflege benoetigt. Wir haben daher eine Marmorserie kreierte, welche die Marmor Farben und Texturen mit dem ausgepraegten Glanz und Transparenz des Glases ausgezeichnet armonisieren.

Marble is an original stone that combines colours and textures which depend on its tonalities, but it is nevertheless an expensive product that needs special cleaning and care. Thinking about this, we have prepared a new range of Flosing Marble glass where those colours and textures combine with the brightness, and easy cleaning.

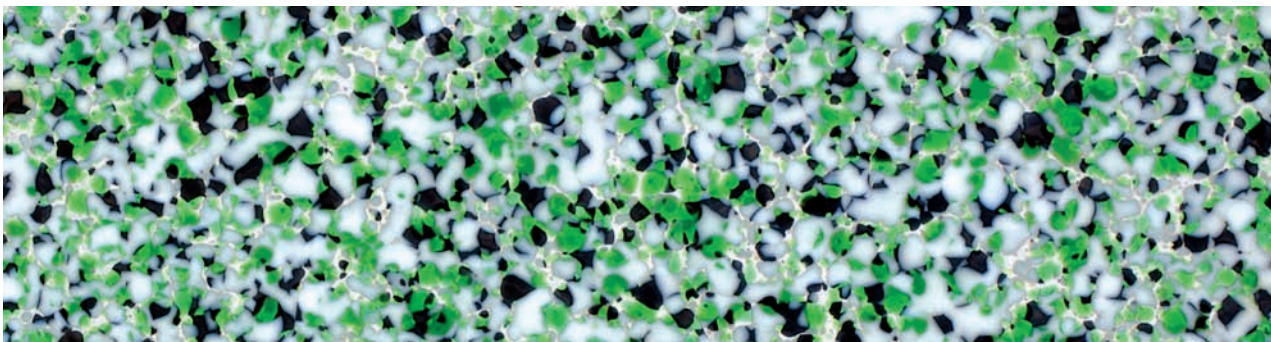
Tafelgroesse 97 x 67 cm 5mm
Sheets of 97 x 67 cm; Thickness 5mm



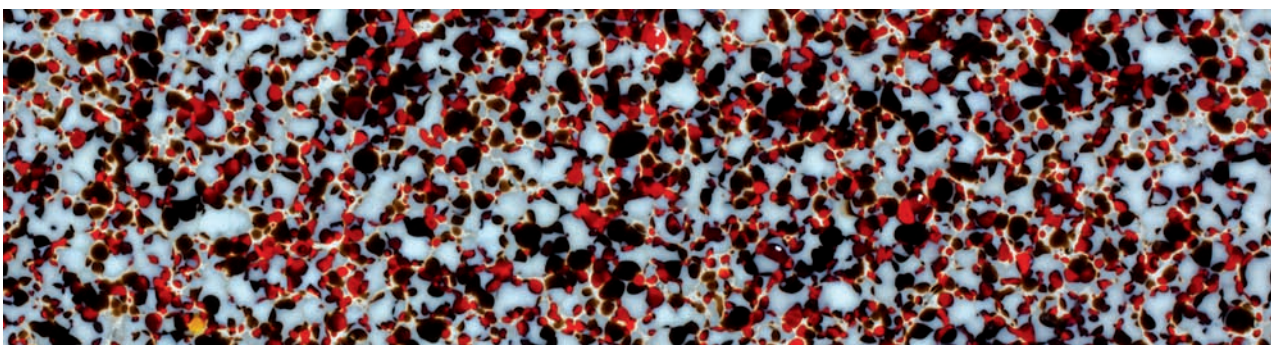
MG 300 Schwarz Granit / Black Granite



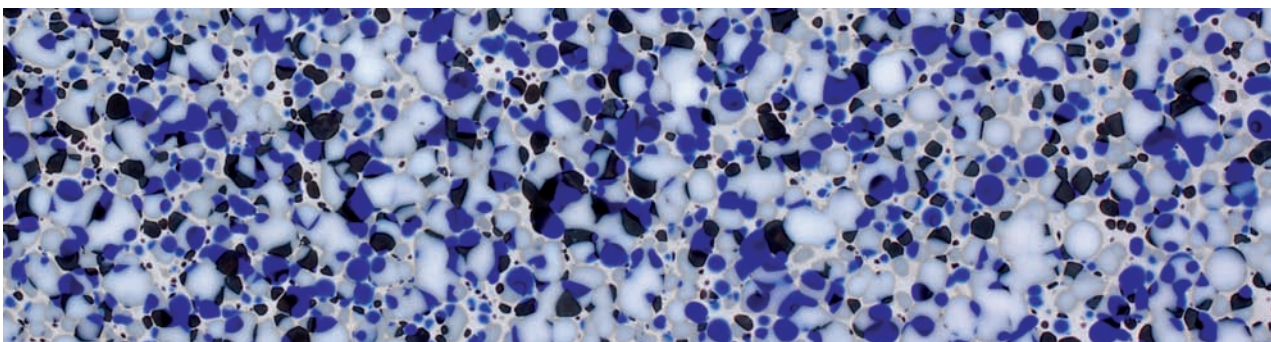
MG 304 Granit Ámber / Amber Granite



MG 302 Granit Gruen / Green Granite



MG 303 Granito Rot / Red Granite



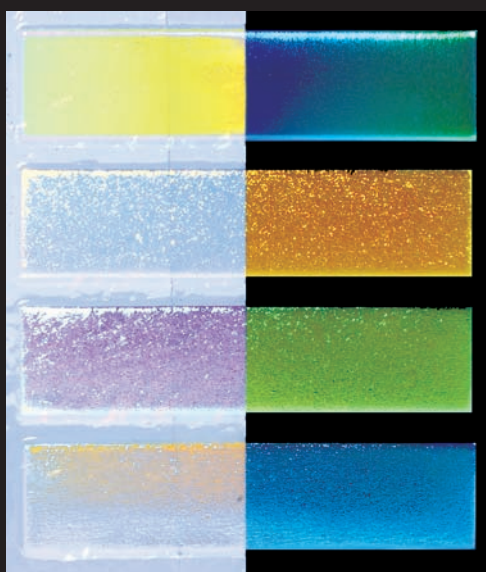
MG 301 Granit Blau / Blue Granite

Flosing Granit *Granite Flosing*

Es handelt sich um eine Serie aus 5 neuen Farben welche ebenso wie beim Granit, kombinieren verschiedene Tonalitaeten und Glanz.

Taefelgrosse 80 x 60 cm 2mm
Sheets of 80 x 60 cm; Thickness 2mm

New range of 5 new colours which, as well as with granite, combine different tonalities and brightness. A new contribution to your creative possibilities that can be combined with our Flosing glass range and frits.



D453 Multicolor Irsiert
Multicolour Iridescent

D452 Kupferblau Irsiert
Blue Copper Iridescent

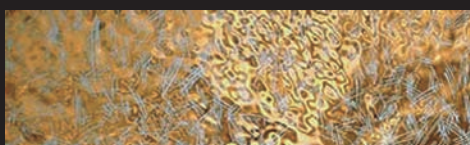
D451 Violet-Gold Irsiert
Violet-Gold Iridescent

D450 Rosa-Gruen Irsiert
Pink-Green Iridescent

Flosing Dichroic (mit Flosing Glas kompatibel)
Flosing Dichroic Glass (Compatible with Flosing glass)

Flosing Serie in 3 Farben und einem kombinierten Multicolor
 Verfuegbar in runde Tafeln von 48 cm Durchmesser oder auch 1/4 davon

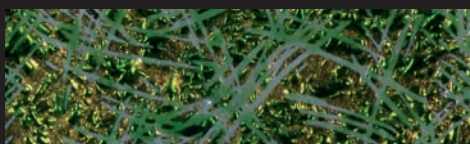
*Range of Flosing glass available in 3 colours and an additional multicoloured one suitable for jewellery and fine fantasy.
 Available in circular sheets of 48 cm. diameter as well as blistered quarter sheet.*



400 Gold / Gold



401 Platin / Platinum



402P Gold fuer Sandwich / Gold for Sandwich

Flosing Edelmetale (Gold, Platin und Gold fuer Sandwich)
Precious Metals Flosing (Gold, Platinum and Gold for Sandwich)

Mit dieser neuen Serie "Edelmetale" koenen Sie einen speziellen diferenzierten Touch in Ihre Fusingarbeiten erreichen.

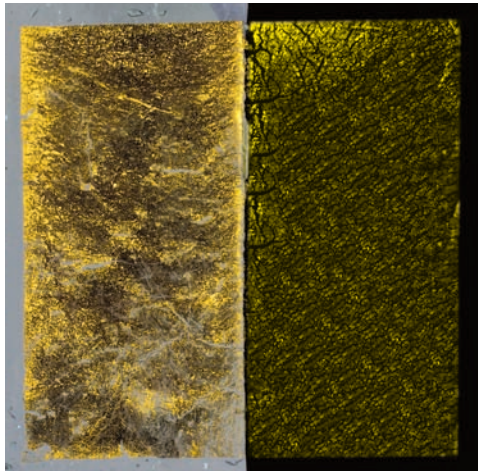
Tafelgroesse 30 x 27 cm und 80 x 60 cm 2mm

Als neueheit verfuegen wir ueber Goldtafeln fuer die Sandwichtechnik welche mit allen unseren Flosing Produkten kompatibel sind.

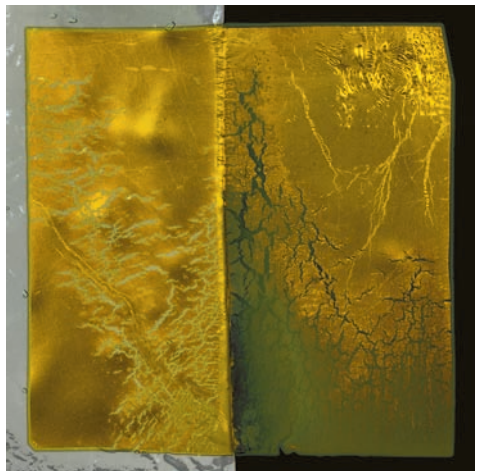
With this new serie "Precious Metals" you will be able to include a distinctive touch in your creations. We began with our Gold and Platinum glass in various sizes: 30 x 27 cm in 2 mm and 80 x 60 cm in 2 mm. As news, we have developed a new special gold for sandwich to combine with the rest of our products, glasses and grains.

Sheets of 30 x 27 cm y 80 x 60 cm; Thickness 2mm

Gold und Silverhefte Gold and Silver Books

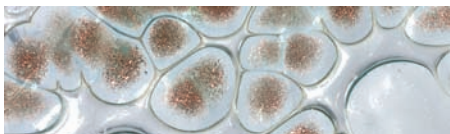


LO 01 Goldheft / Gold Book (80 x 80 mm) 25 Blaetter / sheets
Erzielte Resultat mit einem Blatt
Result obtained with a single sheet

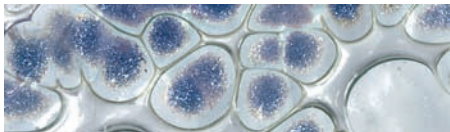


LO 02 Silverheft / Silver Book (85 x 85 mm) 25 Blaetter/ sheets
Erzieltes Resultat mit einem Blatt
Result obtained with a single sheet

Aventurin / Aventurine



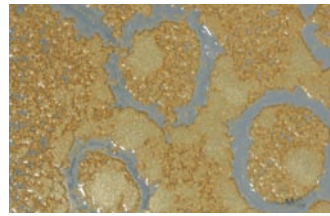
AV01/3 Aventurin Braun / Brown Aventurine



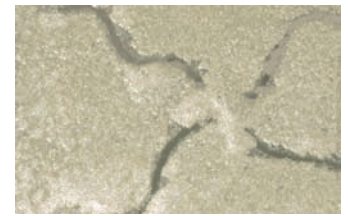
AV02/3 Aventurin Blau / Blue Aventurine
Erhaeltlich in 1/2 Kg Behaelter
Available in containers of 1/2 kg

Spezielle Produkte um Ihre Fusingarbeiten einem speziellen Touch zu verleihen

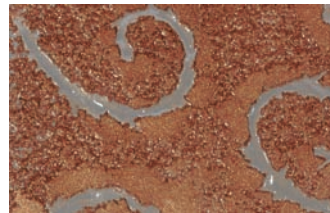
Metalische Pigmente Flosing Metallic colours



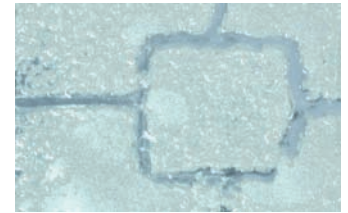
ME 03 Bronze
Brass



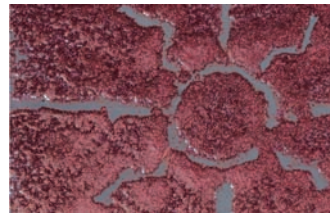
ME 01 Magna Perlmutter
Magna Pearl



ME 04 Goldbronze
Golden Brass



ME 02 Gruen Ligth
Lite Super Green



ME 06 Russet Brillant
Sparkle Russet



ME 05 Rosa Brillant
Sparkle Pinkish

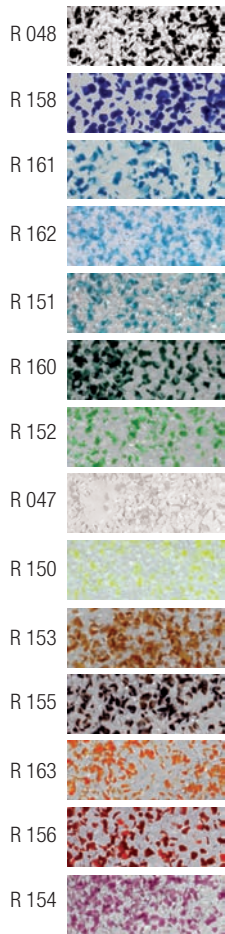
Erhaeltlich in 1/2 Kg Behaelter
Available in containers of 1/2 kg



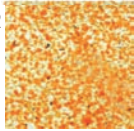
Ansicht eines Fusingstueck mit Metalischem Pigmenten.
Detail of piece made with metallic colours.

Special products, ideal to add a different touch to your art-works when working in sandwich.

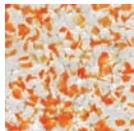
Flosing Plaqué Granulat Flosing Grain Plaque



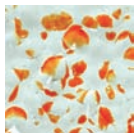
koernung 2 / Grain 2



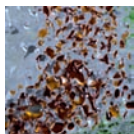
koernung 3 / Grain 3



koernung 5 / Grain 5



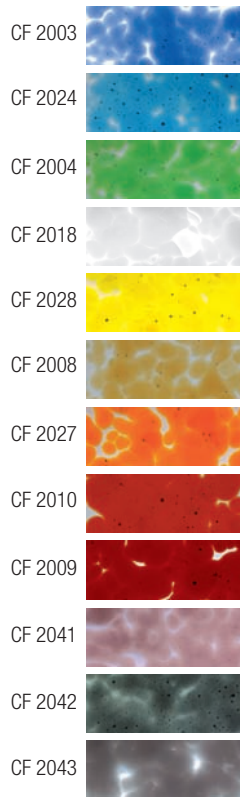
Detail / Detail



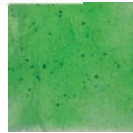
Plaqué Granulat in verschiedenen koernungen 2,3 und 5. Die Kombination verschiedene Intensitaeten hilft mehrere Texturen und Volumen zu erzeugen mit einem transluzenten Abschluss
Verfüegbar in 1 kg Behaelter

Grain Plaque in different grain sizes 2,3 and 5. The combination of intensities will allow you to create different textures and volume to your designs, with a magnificent translucent finish. This product is sold in containers of 1 kilo.

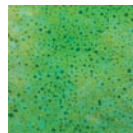
Neue Flosing Granulat New Flosing Grain



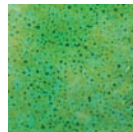
koernung 0 / Grain 0



koernung 2 / Grain 2



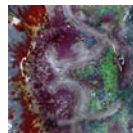
koernung 3 / Grain 3



koernung 5 / Grain 5



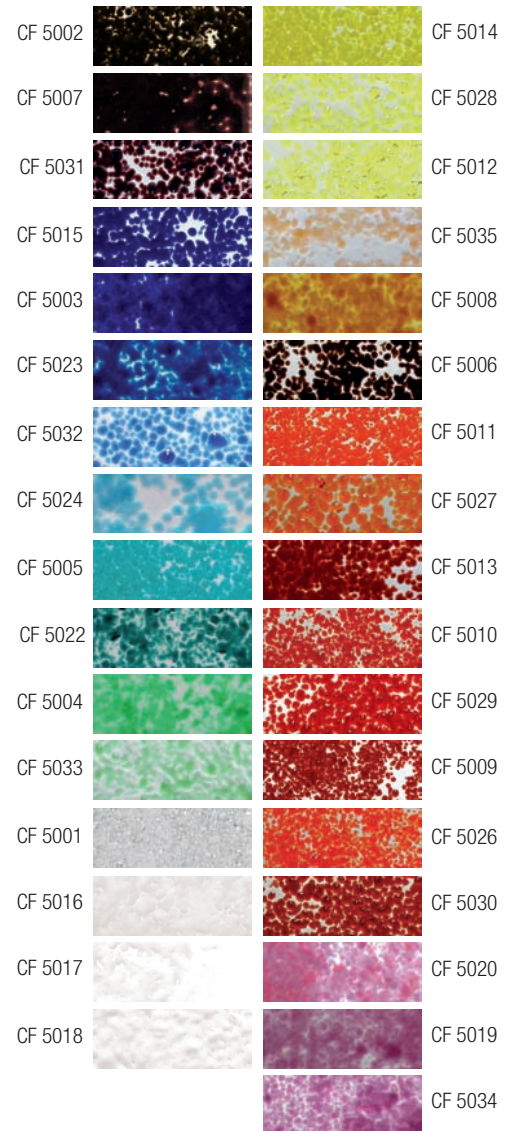
Detail / Detail



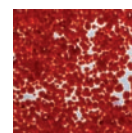
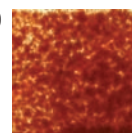
Das neue Flosing Granulat ist wie die Fusinggläser der Serie CM Youghioghny durchgefärbt. Erhältlich in 12 verschiedenen kräftigen Farben und ist mit allen Flosing Produkten kombinierbar. in den koernungen 0,2,3 und 5. verfüegbar und auch in der Sandwichtechnik anwendbar.

We offer a range 12 different colours to sprinkle in different grains (0,2,3,5). These colours or frits, can be applied either on the surface of the float glass or using the sandwich technique in all different grains. This way, we will be able to find different effects and textures.

Flosingfarben Granulat Flosing Colours in Grain

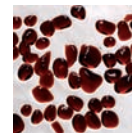
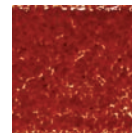


koernung 0 / Grain 0



koernung 3 / Grain 3

koernung 2 / Grain 2



koernung 5 / Grain 5

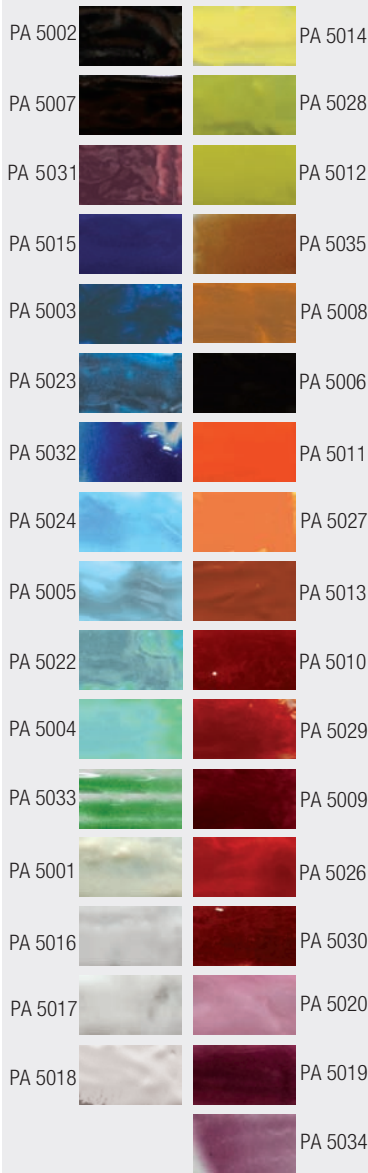


Detail / Detail

Verfüegbar in 33 Farben in den koernungen 0,2,3, und 5. Anzuwenden auf die Glasoberflaeche sowie in die Sandwichtechnik

We offer a range of 33 different colours to sprinkle in different grains. (0,2,3,5) These colours (frits) can be applied either on the surface of the float glass or using the sandwich technique (Grain 0 & 2).

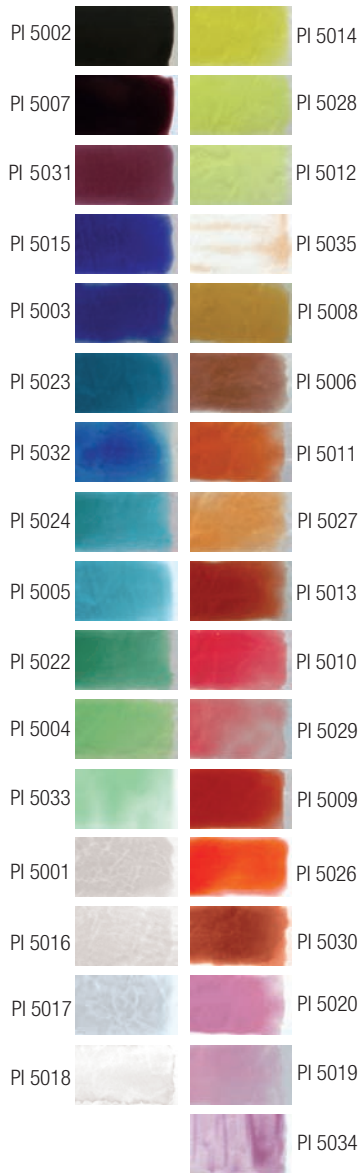
Spachtelmalfarben *Putty colours*



Mit Spachtel oder mit dem Injektionsgeraet anzuwenden, welche verschiedene Reliefs und Strukturen verleih. verduenbar mit DUA2
erhaeltlich in 370ml Behaelter

The putty can either be applied with a spatula or with the Electronic Applier tool to give us different textures and volumes in the design of the final product. This product is sold in jars of 370 ml and can be thin down the DUA2

Pinselfarben *Paintbrush*



Diese Farben werden mit pinsel oder Airbrush aufgetragen und sind Wasserloeslich

Erhaeltlich in 250 Gr Behaelter

The colours to apply with paintbrush or airbrush, can be thinned down with oil or water, depending on the final texture we desire. This product is sold in containers of 250 grs.

Fritten *Eggshells*

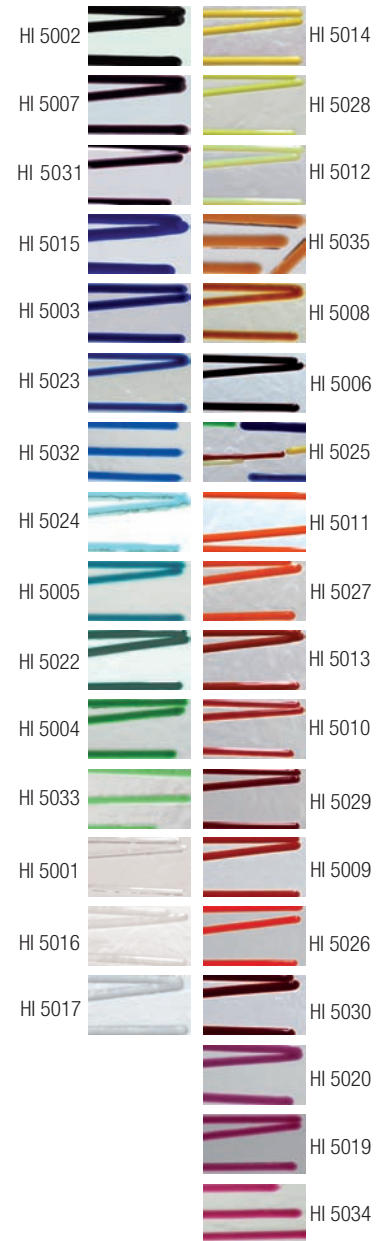


Sind ideal um jede Fusingarbeit zu ergaenzen.

Erhaeltlich in 400 Gr Behaelter

The eggshells or frits can be used to complement the different details of any desing. The eggshells are sold in containers of 400 gr.

Spaghetti *Mini-rods*

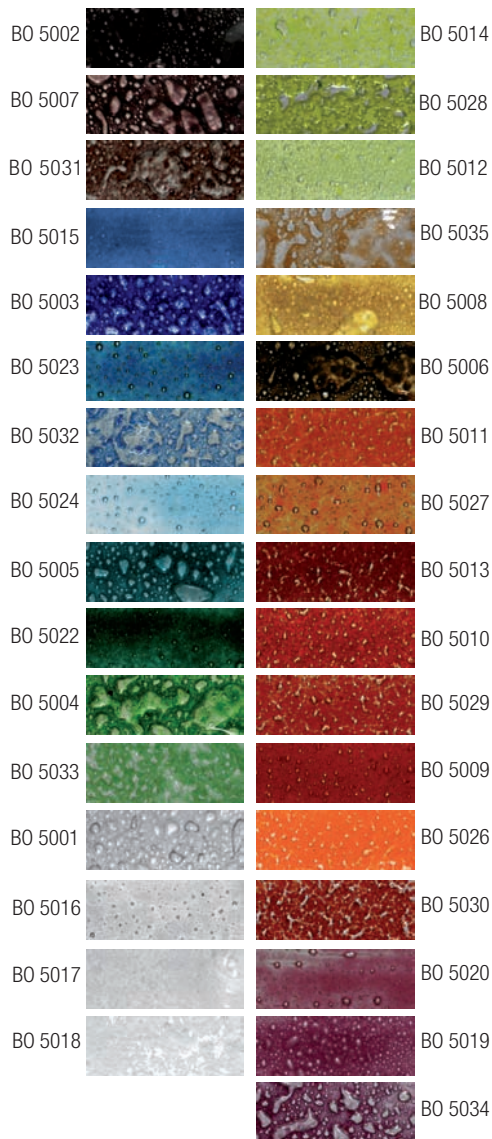


Sind 60 cm lang und zwischen 1,2 bis 1,6mm Dick

Erhaeltlich in 250 Gr Behaelter

The mini-rods can either be placed directly on the float glass or we can apply heat with a gas welding torch and shape them. The mini-rods sizes are from 1.2 to 1.6 mm of diameter and 60 cm length. They are sold in tubes of 250 grs.

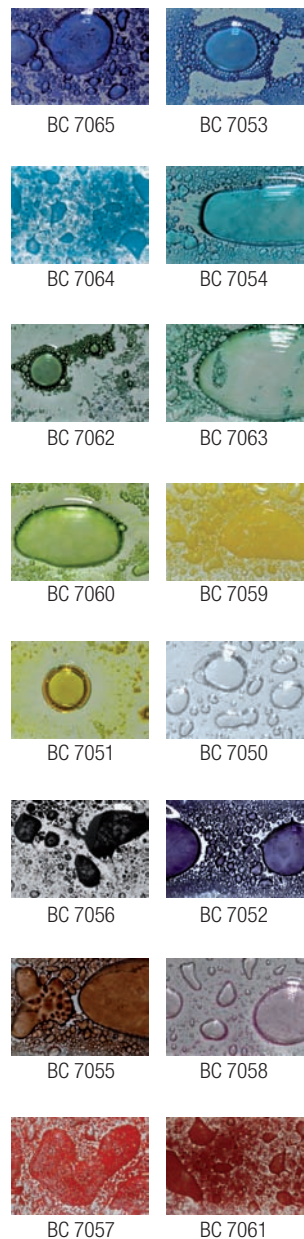
Blasenpulver Boreal *Boreal Bubble*



33 verschiedene Farben
welche in die Sandwichtechnik
anzuwenden sind (kleine Blasen)

Verfuegbar in 1 kg Behaelter

Blasenpulver Clásic *Classic Bubble*



Wir verfuegen ueber 15 verschiedene
Farben und 1 Farblose Transparent
(Grosse Blasen) fuer die Sandwichtechnik

Verfuegbar in 1 kg Behaelter

Blasenglaeser mit Flosing Glas *Bubble Effects with glass sheets*



5 Neue Tonalitaeten aus der Clasic Serie
Flosing Transparent.

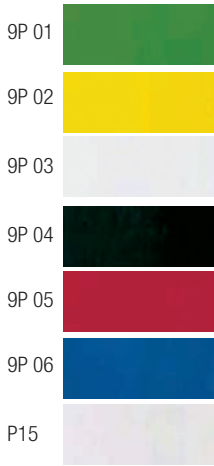
Wir erreichen einem Blasenefekt
wenn wir das Glas auf die Rueckseite legen

We offer a range of 33 colours of
Boreal Bubble effect (Small bubble).
These products are applied through the
"sandwich" technique. The Boreal
Bubble effect Flosing colours are sold
in containers of 1kg.

We offer a range of 15 colours and
one colourless transparent Classic
Bubble effect (Big bubble). These
products are applied through the
"sandwich" technique. The Classic
Bubble effect Flosing colours are
sold in containers of 1 kg.

5 New tonalities of classic
transparent glass sheets with the
peculiarity that we can produce the
bubble effect only by placing the
colours glass sheets face down.

Malfarben fuer Hochtemperatur Paints For High Temperature



Wir verfuegen ueber 6 Farben fuer Vollfusing und ein Malmittel Typ A um die Farben zu verduenen.

Wir verfuegen auch ueber eine spezifische Farbe fuer Glasfliessen mit der Ref; P15 Diese farben werden verwendet um Ihre Fusingobjekte zu ergaenzen. Alle Farben sind miteinander kombinierbar.

We offer a range of 6 different colours for fusing for high temperature and a vehicle type A to thin down the colours. It is sold in tins of 250 grs, 1 kg and 5 kg. We have as well a special white painting for making glass mosaics and tiles whose reference is P15. These paints are applied as a complementary addition to the fusing pieces.

All the colours can be mixed to each other.

Malfarbe fuer Glasfliessen P15 Paint for tiles P15



Rueckseite mit P15 bemalt.
Painted back side with P15

Weisse Farbe stark Opal speziell fuer Glasfliessen oder Objekte wo Sie die Transparenz neutralisieren moechten um zu vermeiden dass die Glasfarben Ihre Leuchtkraft verliert.

White paint of intense opacity. Special for glass mosaics and tiles or applications where neutralizing transparency is required, avoiding that the underlying colour modifies the tone on the glass piece.

Also available in ready to use glass sheets with reference P50 in different thickness.

Flosing Malstifte fein Flosing Outline Pen



PF100 - PF107

6 verschiedene Farben die uns ein feines und regelmaessiges zeichnen erlaubt. mit Duesen in 2 groesen : 0.07 und 0.05 mm

6 references of paints that allow a steady, fine and controlled trace. The tip allows fitting nozzles to variate line thickness. You can incorporate 2 metallic nozzles 0.07 mm and 0.05 mm



Metalischen Desen/ Metallic Nozzles

Malmittel A Vehicle A



Der Ideale komponent die Hoch und Niedrig Temperatur Malfarben zu verduenen ohne Ihre Densitaet zu verlieren.

The suitable component when we want to dilute the high and low temperature paintings to vary its density without loosing in excess the necessary viscosity for an optimal use. In addition it allows us to obtain translucent tonalities.

Flosing Malstifte Flosing Felt-pen



12 Farben in den gleichen Farbtoenen wie die Fritten Flosing- Serie. Ideal fuer die kontrollierte Anwendung auf alle Fusingobjekte.

12 references equivalent in tone to frits range. Ideal for controlled application of colour on all sorts of designs with sheets, frits, etc. Compatible with floated glass.

Malfarben fuer Niedrigtemperatur Paints For Low Temperature



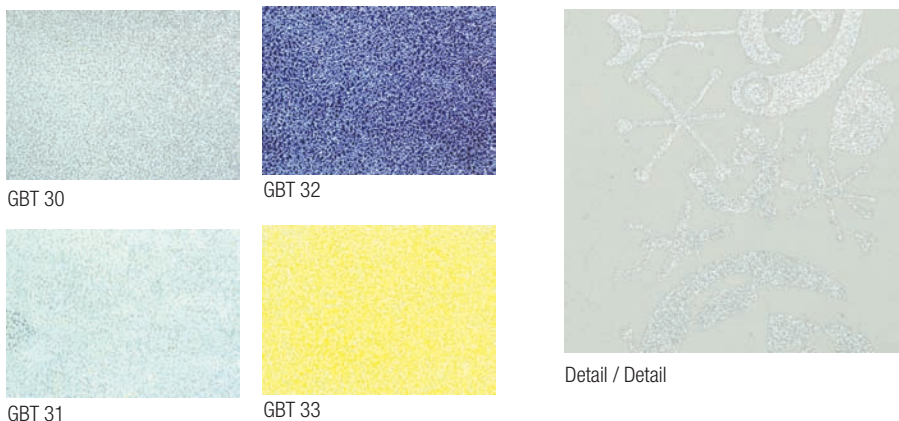
Vitrifizieren in dem Temperaturbereich zwischen 500°C und 600° C. Sie finden Verwendung fuer die Dekoration, Vasen, Glaeser, Lampen usw. Ideal anzuwenden mit Malpinsel oder Airbrush. Erhaeltlich in Behaelter von 250gr, 1kg und 5kg
Wir verfuegen ueber 17 Glanzfarben.

These paintings vitrify between 500°C and 600°C of temperature. They are used for decoration glass (glasses, illumination, washbasins, etc.). They can be applied with brush as well as with airbrush. The flux PB 50 is used to make the tonality of the colours more translucent. It is not advised to reduce the temperature. In addition, we can obtain acid matt effects (soft matt) using PB 69 and sand matt effects (intense matt) with PB 70. We have a range of 17 bright colours in packages of 250 grs, 1 kg and 5 kg.

Grisaille Grisaille



Flosing Granulat Niedrigtemperatur Low Temperature Grain



Die beste Option das Glas mit Fritten zu dekorieren ohne Transparenz zu verlieren. Schmelzen zwischen 500° und 600° C. Erhaeltlich in 2er koernung. Ideal um Fusingarbeiten zu ergaenzen oder fuer die Dekoration von Vasen, Lampen, Lavabos und Logos gestaltung. kombinierbar mit Malfarbe der Niedrigtemperatur.
Erhaeltlich in 1 kg Behaelter.

The best option to decorate the glass with frits maintaining the glass transparency. Fusing temperature between 500°C and 600°C. Available in grain size 2. To be used for glass decoration on pieces already fused or for customize pieces like bottles, vases, glasses, lighting, wash basins, etc.

Verfuegbar / Available 250 gr.

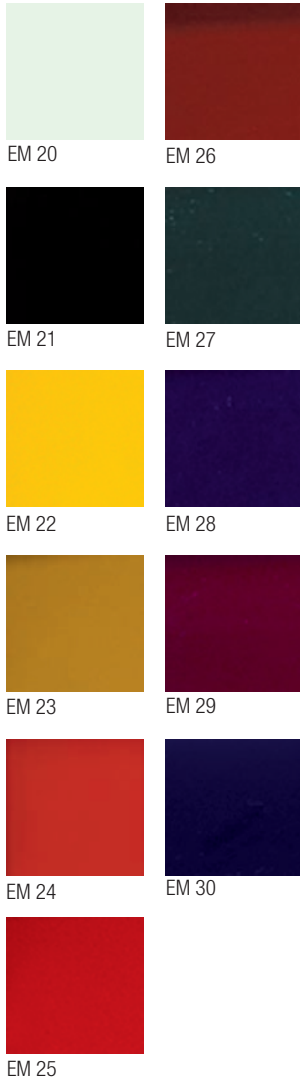
Verfuegbar in 11 verschiedenen Farben. Ideal fuer die Bleiverglasungstechnik und Glasmalerei.

Available in 11 different colours. Can be applied for any different lead work to make a full range of combinations.

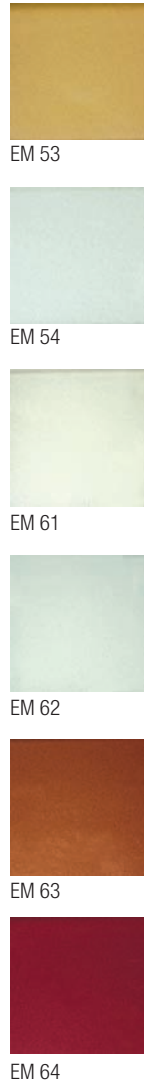
Emailfarben

Monocomponent Enamel For Glass, Water-Based For Outdoor and Indoor Use

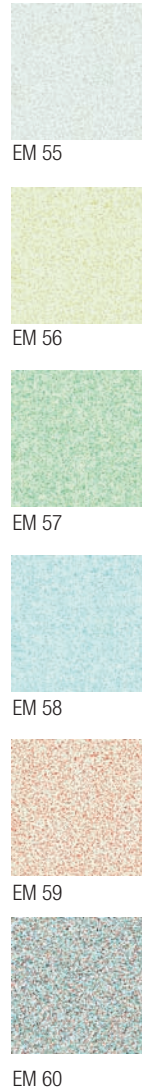
Opalfarben Opaque



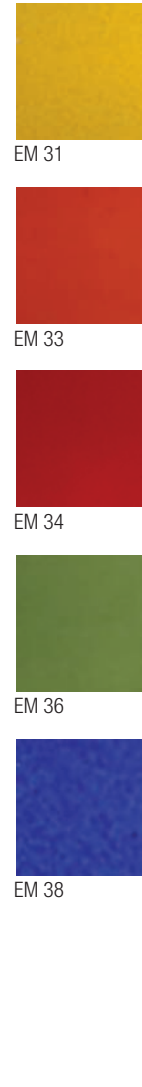
Metálic Metalics



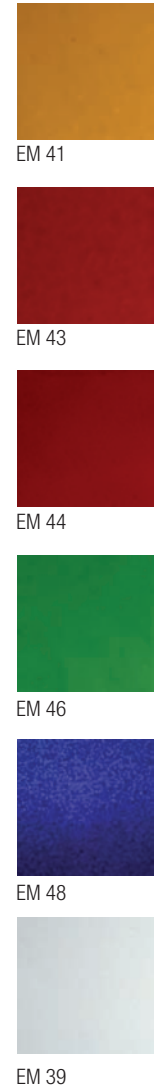
Purpurin Glitter Effect



Transparent Transparent



Translúcent Translucent



VERWENDUNGSIDEEN

- Tischplatten
- Lavabos
- Glasmoebeldekoration
- Glastraenwende
- Wandverkleidungen in Innen sowie Aussen Bereich

IDEAS TO APPLY

- Tables
- Glass sinks
- Glass for furniture
- Arquitectural Glass
- Wall Covering for internal and external use

Technische Charakteristiken

- Ausgezeichnete Haftung auf Floatglas, keramischen Email und Metalischen Oberflaechen.
- Ausgezeichnete Feuchtigkeits Resistenz
- Ausgezeichnete Resistenz von Verduenern Esenzen und Spuelmittel.
- Ausgezeichnete Resistenz von Licht und UV Strahlen
- Ausgezeichnete Haftung auf beschichtete Oberflaechen mit PVB -EVA-Giesharz
- Ausgezeichnete Haftung an Silikonen es wird neutral Silikon empfohlen
- Ausgezeichnetes Verhalten an allen Glasmanufakturen.
- Emailfarben koenen mehrschichtig aufgetragen werden und sind mit Spritzpistole, Serigrafie oder Walze zu verwenden.

ANWENDUNG:

- Troecknen : 165°C ca. 45 min.
- Troecknen: 200°C ca.5 min. unter Infrarot in Tunnel.

MIXUREN/ ADDITIVES

EM49 Aditivo Adhesivante (1%) / Adhesive Additive (1%)

EM50 Aditivo Retardante 2 (Max 5%) / Retarded Additive 2 (5%)

TECHNICAL CHARACTERISTICS OF OPAQUE TRANSP., AND TRANSLUCENT ENAMELS:

- Excellent adhesive to float glass, ceramic and metallic layers
- Excellent resistance to humidity
- Excellent resistance to solvent, essences and dishwasher
- Excellent resistance to light and U.V.
- Excelent adhesion to stratify with PVA-EVA-RESIN
- Excellent adhesive to silicones (advise neutral silicones)
- Excellent behaviour to any glass manufacture
- Enamels that can be re-varnished with different layers to use with air brush, silk screen printing or continuous roller

USE:

- Drying: 165°C 45 min. Approx.
- Drying: 200°C 5 min under infrared in Tunnel. Approx

Glaslavabos *Artisan Sink Bowl*




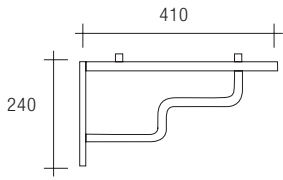

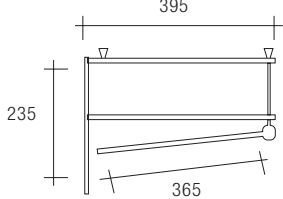

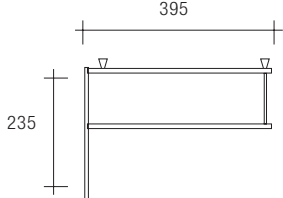

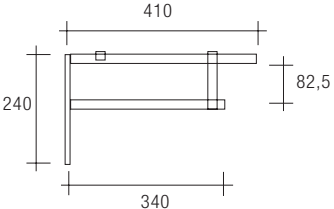

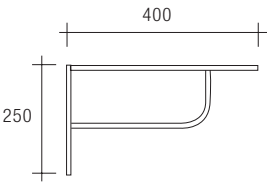

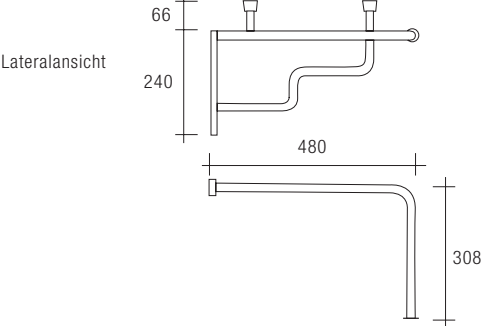


Verfuegbar in 8 Farben (Blau, Weiss, Hellbraun, Gruen, Rosa schwarz, Gelb und Farblos.

32 cm Durchmesser. Erhaeltlich mit oder ohne Rand.

*Assorted artisan sink bowls in 8 references, 7 marble colours (blue, white, light brown, green, rose pink, black, yellow) and a clear one
Approximated working diameter is 32 cm. Available with or without edge.*



Glaslavabohalter aus Chromstahl *Inox Sink Brackets*

	SA 03	
	SA 08 mixt	
	SA 07 Einfach	
	SA 02	
	SA06	
	SA 05	 <p style="margin-left: 20px;">Lateralansicht</p>
	SA 01	
	SA 04	

Auswahl an Lavabohalterungen aus Chromstahl Glanz oder Matt mit oder ohne Handtuchhalter.

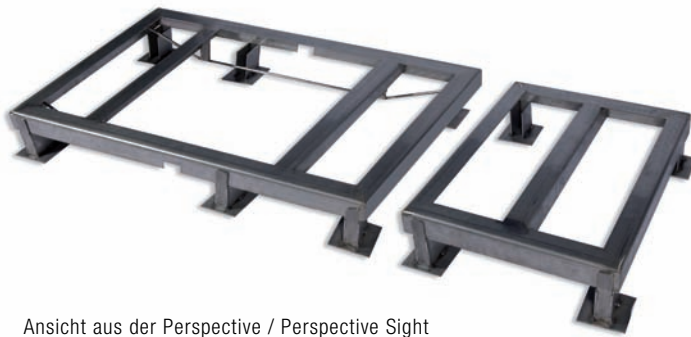
Stainless steel brackets with or without towel bar for your fusing and transparent sinks.

Glaslavaboabsenkform aus Chromstahl ML 05

*Stainless steel support
for washbasins moulds*



Frontalansicht / Frontal Sight



Ansicht aus der Perspective / Perspective Sight

Verstaerkte Chromstahl fuer eine ausgezeichnete Planimetrie
Masse; 60 x 98 cm

Ergenzungsstuecke Modell ML 06. Massen; 60 x 48 cm

*It has 2 reinforced bars that avoid the loss of planimetry.
Its compact design allows to an easy handling for the assembly
and disassembling in the kiln. It includes 6 movable legs.
measurements: 60cm x98 cm
The size of the support can be increased with the optional
lateral extensions ML 06.
measurements: 60cm x 48cm*

Brennpapier Ceramic Paper



Verfuegbar in 2,3 und 5 mm. Rollenlaenge 20,15 und 10m.

*Manufactured from high purity and quality refractory fibres
and designed for high temperature insulation. Advanced
production techniques ensure uniform fibre distribution and
close control of thickness and density.*

*Ceramic Paper is available in standard roll sizes of 610, 1000
and 1220mm wide, in 3.0 mm. thicknesses and 15 m.length.*

Keramische Platten (Ceraboard) Ceramic Boards



Empfohlen fuer alle Applikationen bis 1260°C
Erhaeltlich in 10,20,40 und 50mm Dicke

*Boards supplied in pannels made from a slurry of refractory
fibres and binders which have a low organic content.
The combination of different refractory fibres, inorganic
and organic binders in different proportions allows types
of boards to be made suitable for different use
temperatures.*

*Tamaño/size: 1200 x 1000 mm. Espesores / thickness:
10, 20, 40 and 50 mm.*

**Trennpulver fuer Fusingformen
Wet separating Powder (for moulds)**



Die Beste Option fuer Ihre Fusingobjekte.
mit Pinzel aufzutragen oder fuer eine gleichmaessige
und kontrollierte verteilung mit Spritzpistole.

*Your best choice when dealing with cast or thermobending
art pieces. Its fine grain allows a soft texture according to
your preferences or job requirements. Brush or air gun
application on top of a mould for an even and controlled
distribution.*

**Trennpulver fuer Fusing
Dry separating powder (Shelf-primer)**



Hochwertiges Trennpulver Speziell fuer Fusing.
Fuer mehrere Anwendungen.
Mit dem Sieb auf dem Ofenbett gleichmaesig verteilen.

*High performance powder special for fusing. It may be
reused several times for productivity in continuous work.
Sieve applied on top of the kiln surface, for an uniform
distribution and high definition texture.*

**Sieb, Pinzel, Scalpelmesser
Sieve, Brush, Blade Handle, Blades**



Die geeigneten Werkzeuge fuer Ihre Fusing Arbeiten.

The right tools for the right job when applying separating powder, grooming kiln pads, etc.

**Plástik 2 m
Plastic 2 m**



Spezieller Plastik um Ihre Wunschtextur im Ofenbett zu gestalten.

*Special robust plastic for creating the right and classic texture
in your flat fused pieces. It allows a fine or coarse texture
depending on your preference.*

**Papier fuer glatte Textur
Special Paper for Non-Texture
1 m x 76 m**



Brennpapier fuer glatte Oberflaechen. Breite 1.04 m.

*Special paper for no-texture. Can be sold in meters or by full
rolls.*

Kleber fuer Granulat und Fritten *Grain and Frits Glue*



Hochwertiger Kleber um Fritten sowie Fusingstuecke zu fixieren.

Anzuwenden mit Pinsel, Spritzpistole oder Airbrush. Langsames trocknen 15 bis 20 min.

High quality glue suitable for holding frits and cut glass components of when assembling pieces before taking the composition to the kiln. May be applied using a brush, tampon, and aerograph, depending on the final texture of design. Slow drying (from 15 to 20 minutes).

Disponibile / Available:

9PEG 1 kg

9PEGM 500 gr

Fusingkleber *Glue For Fusing* 9PEG/F



Hochwertiger Fusingkleber.

Schnelles trocknen. (2 bis 3 sek).

50gr Behaelter

High quality glue to stick any fusing piece before fusion. Fast Glue. Fast drying (from 2 to 3 sec). Bottle of 50 gr.

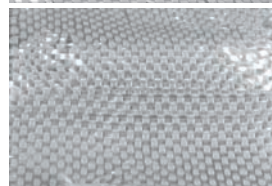
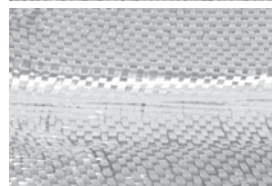
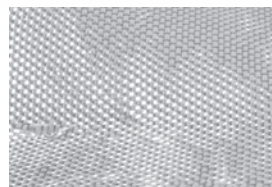
Pegamento UV UV05 *UV Glue*



Hochwertiger UV-Kleber fuer Glas und andere Materialien. 250 gr Behaelter

High performance glue for cold fusing fused bits or blocks to glass surfaces, permanently setting the piece using a UV lamp. Bottle of 250 gr.

Fusing Textilien *Textile for fusing* TJF200, TJM270, TJG500



Spezielle Fusing Textilien.

Erhaeltlich in 3 Dicken. Masse; 1m x 0.50 cm in die Sandwichtechnik zu verwenden.

Special Textile for fusing. Available in 3 different thickness. Units of 1 x 0.50 m always to be used within the sandwich technique.

Briefbeschwerer *Glass Drops for Paper Weights* PP01



Spezialglas um Fusing Briefbeschwerer zu fabrizieren Ideal als Werbegeschaenk

Special glass to manufacture paper weights. Ideal for corporative pieces or details.

kathaldraht fuer Fusing *Wire for fusing*



Spezieller Kathaldraht fuer Fusing
0.5 mm und 1 mm.

Wire for fusing available in 1mm and 0.5 mm. Ideal for making all kind of imitation jewellery.

Farbreiber *Mullers*



Drei verschiedene groessen. Ideal um drei verschiedene Arten von Texturen erreichen.

Three sizes, based on the application. Ideal to obtain different types of texture in the oil mixtures with paste or brush before its application.

Silikontropfen *Silicon Pads*



Silikontropfen zum Schutz der Glaeser
in verschiedenen Groessen

Wide variety of silicon pads for a quality touch in your desktop pieces, protecting them from sliding on delicate and un-textured surfaces. Different sizes and colours for the right choice.

Spachtelfarben und Pinselmalfarben-Oel *Oil for Putty colours and Paintbrush colours*



Spezielles Oel fuer unsere Produkte. 1 und 5 Lt. Behaelter

Special oil formulated for our products putty and brush to achieve effects of shade and volume. Available in containers of 1 and 5 litres

Glasur Vitreo BV1 y BV2 *Vitreous Varnish BV1 and BV2*



Ideal um die Devitrifizierungsprozess zu verhindern
Erhaeltlich in 500 Gr. Behaelter

Used to prevent devitrification in fusing and thermalbending. Available in containers of 500 gr.

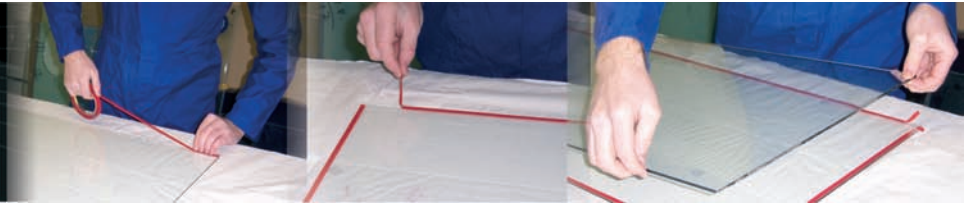
Protektion Fritt *Protective crystalline Frit*



Spezielles Fritt um einen Schutz ueber dem Fusingobjekt zu bilden.
Frei von schaedlichen Stoffen.

1 Kg. Behaelter

Special frit to create a crystalline layer on the colour, free of injurious products that will allows us to use it, once fused, with products that are in direct contact with food. Available in containers of 1 Kg.



Farben fuer Giessharz
Pigments for Resin



11 Opalfarben und 8 Transparentfarben einfach zu kombinieren um spezielle Farbtoene zu erreichen. Ausgezeichnete Resistenz auch durch Sonneneinstrahlung.

11 opaque and 8 transparent colours, easily combinable for your personalized tone or veined effect. Sun light resistant guaranteed for ten years of continuous exposure

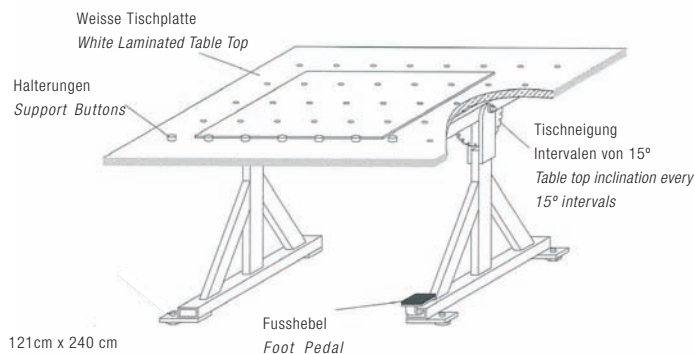
Giessharz 25 k
Resin for laminated glass



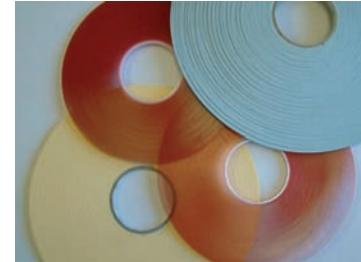
Hochwertiger Giessharz fuer Glaeser oder Fusingarbeiten. Erhaeltlich in 25 Kg Heimer.

High quality bi/component resin for laminating either plain glass or fused glass works. May be tinted for an artistic and personalized look.

Laminiertisch
Cold laminating table
121 cm x 240 cm



Doppelschichtiges Band fuer Laminierarbeiten.
Double side adhesive tape for laminate



Ausgezeichnete Haftigkeit. In verschiedenen Dicken und Laengen erhaeltlich.

Excellent adhesive capacity and assorted variety of thicknesses and roll lengths.

Weiss / White
6mm x 0.8 mm x 100m
6mm x 1.0 mm x 33m

Transparent / Transparent
6mm x 1.5mm x 25m
6mm x 2.0mm x 16m

Tisch, Dossierer, Trichter, Vasen, Spritzen, Nadeln.
Table, dispensers, funnel, drum top, jars, syringes, needles



Profesionelle Spritzpistole fuer Druckkompressor *Gravity Feed Spray Gun for Detailing*

Professionelle Spritzpistole speziell fuer Detailarbeiten und kleinere Flaechen. Mit 3 regulierungsventile um den Farbfluss, die Druckluft und die Spritzflaeche zu regulieren. Inklusiv einem Filter der verhindert, das Fremkoeper auf die Oberflaeche gelangen.

Characteristiken:
 Farbfluss: 0,8 mm.
 Benoeigte Druck: 10-25 PSI
 Luftverbrauch: a 2,5 bares 80 l/min.
 Farbausgabe: 75 cc./min.
 Luftverbindung: 1/4" BSP
 Gewicht ca.: 350 gr.
 Fullmenge: 0,25 litros (mit antitropfsystem)



Specially designed for detailing and touching up small surfaces. The gun features three built-in regulators to control paint flow, air flow and material width. Gun is supplied with a filter to stop foreign particles from being sprayed on painted surfaces.

*Specification:
 Fluid nozzle: 0,8 mm.
 Pressure required: 10-25 PSI
 Air consumption: a 2,5 bar 80 ltr./min.
 Material output: 75 cc. /min.
 Air connection: 1/4" BSP
 Approximate WT.: 0,35 kg.
 Cup: 0,25 ltr. (designed to avoid the dripping)*

Sandstrahlmaschine *Sandblasting machine sabbiatrice*

Portabel Sandstrahlgeraet fuer mobiles Arbeiten. Ideal fuer kleine und einfache Arbeiten. Ist Ideal fuer Fusing-Ateliers, um Fusingobjekte zu ergaenzen. Dank seinem integrierten System, benoeigt keine Kabine und keine Staubsauganlage. Spezielle Pistole mit Buerste fuer die Sandstrahlung und gleichseitiges saugen. Einfach zu bedienen und mit Raeder ausgaestet.



Sandblasting machine suitable to perform spotted sandblasting jobs and surface restoration using a unique recovery system preventing the dispersion in the air of dust or other abrasive. It can also be used to make designs and drawings on glass, marble surfaces etc.

Motor: 1080 W by-pass
 Manometer: 2200 mm H2O/220 mBar
 Luftfluss: 180 m3/h
 3000 l/m
 Aufnahmemenge: 35 l
 Gewicht: 16 kg
 Masse: 36x36x76 cm

*Motor: 1080 W by-pass
 Pressure gauge: 2200 mm H2O/220 mBar
 Air flow: 180 m3/h
 3000 l/m
 Tank total capacity: 35 l
 Weight: 16 kg
 Dimensions: 36x36x76 cm*



Taurus 3 Taurus 3



Die TAURUS 3 erlaubt uns viel Zeit zu gewinnen und öffnet uns mehrere Kreative Möglichkeiten.
Schneidet in alle Richtungen, das Sägeblatt ist vollständig mit Diamant beschichtet und schneidet in 360° auf alle Seiten die das Blatt kontakt hat.
Realisiert alle möglichen Schnitte auf sehr einfache Art.
Poliert das Glas zur gleichen Zeit und definiert sehr genau den Schnitt.
Das Sägeblatt hat eine sehr lange Lebensdauer.
Der Schnitt wird auf nasser Oberfläche realisiert aber das Glas bleibt trocken.
Es ist ein Sichereres Geraet schneidet fast alles und erlaubt grossere Flaechen zu bearbeiten.
Sie ist sehr leise und einfach zu reinigen.



TECHNISCHE DATEN

Motor	220V	1/5 HP
Masse;	45 x 40 cm.	
Arbeitsflaeche:	40 x 30 cm.	
Saegelblatt	Ø150 mm.	
Gewicht	7 kg.	

TAURUS 3 allows us to save time and money and enlarges the creative possibilities.

It cuts in all the directions: the thread contains diamond on all its surface, cuts to 360° on all the sides where it has contact with the material.

It makes internal and external curved cuts: with taurus 3, each cut, even the most difficult one will be very simple.

It sandpapers when cutting: it leaves edges well defined and it allows to save time.

The Thread has a life much longer than any other diamond thread of the market.

The cut is made in humid but the result is dry: the water is projected in such a way that it is deposited in all the contour of the thread without soiling nor splashing.

The remainders of stone, soft glass, plastic or metals deposit in the water leaving the work table perfectly clean. It is extremely safe: It cuts practically the everything except the hands.

The operative part can be separated and be used without the water source like a cutting alternative.

It allows therefore to cut materials bigger in size than the working table and this makes, in addition, easy to clean.

It is tremendously quiet.

It has few components, which implies one long duration of the machine.

It includes a protective screen.

It incorporates a new working table.

The zone of cut is perfectly visible to the maximum height of useful cut.

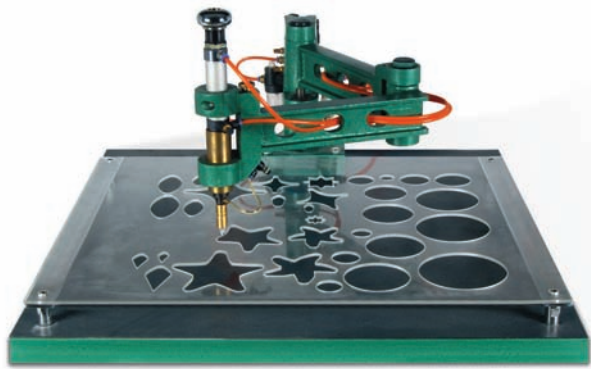
It incorporates a useful integrated spot light.

Taurus 3 is made in indeformable polycarbonate.

TECHNICAL DATA

Motor	220V	1/5 HP
Case size	45 x 40 cm.	
Table size	40 x 30 cm.	
Blade	Ø150 mm.	
Weight	7 kg.	

Pantógraf (Glasschneidemaschine) *Pantograph*



Eine sehr praktische Maschine wenn es darum geht Serien des gleichem Designs zu produzieren. Erlaubt die Produktionszeit stark zu reduzieren und zur gleichen Zeit die Produktqualitaet zu standardisieren.

Perhaps the most useful tool when dealing with batch production and standardised articles. Allows important reductions in manufacture timing while enhancing quality for an effortless standard production. Cut thicknesses going from 2 to 8 mm.

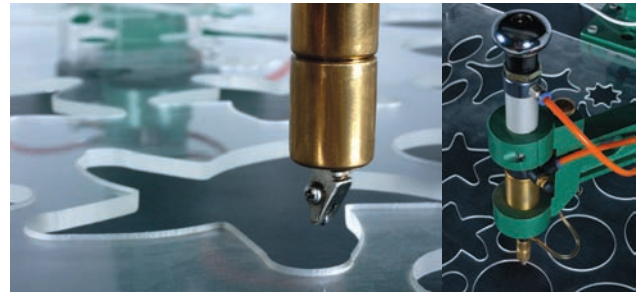
Elektronisches Dossiergeraet fuer Farbpaste *Putty Colours Electronic Applier*



Praezissionsgeraet fur Filigrane, feine Zeichnungen, Schriften auf Kunstobjekte usw. Geschwindigkeitskontrolle fuer jeden Arbeitsgang. Ideales Geraet um mit unserem Spachtelpaste, Wasserloessliche Malfarben und Farben der Hoch und Niedrig Temperatur zu verwenden.

Precision tool for filigrees, fine line drawing, writing in fine glass artwork or artist signature of your creation. Can be adjusted for a personalized applying speed. Ideal to be used with putty colours, colours for paint brush or paints for high and low temperature.

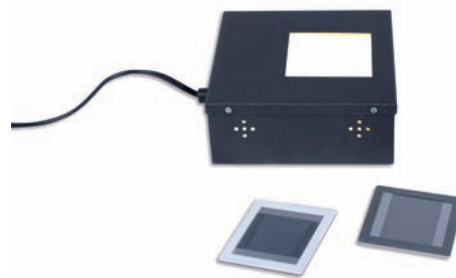
Chablonen fuer Schnitte mit dem Patograf *Templates for Cutting Pantograph*



Existiert eine Chablone fuer jedes Design unseres Musterkataloges. Es ist moeglich Ihre eigene Chablone fuer Ihre Bedurfnisse zu kreieren.

There is a template for every design in our samples catalogue. It is also possible to create the right template for any design for an exclusive product line.

Estressometer fuer Glas *Stressometer for Glass*



Dieses Geraet ist ein muss um die Kompatibilitaet des Glases zu ueberpruefen.

Necessary tool to control the compatibility of the glass.

Profesionelle U.V.Lampe *Professional electric UV-lamp*



Elektrisches Geraet um die Innseite des Glases zu erruieren.

Electric professional tester for float glass, essential to determine the tin-plated side of all float glass.